

“A people without knowledge of their past history, origin and culture is like a tree without roots.” Marcus Garvey

Logan High School

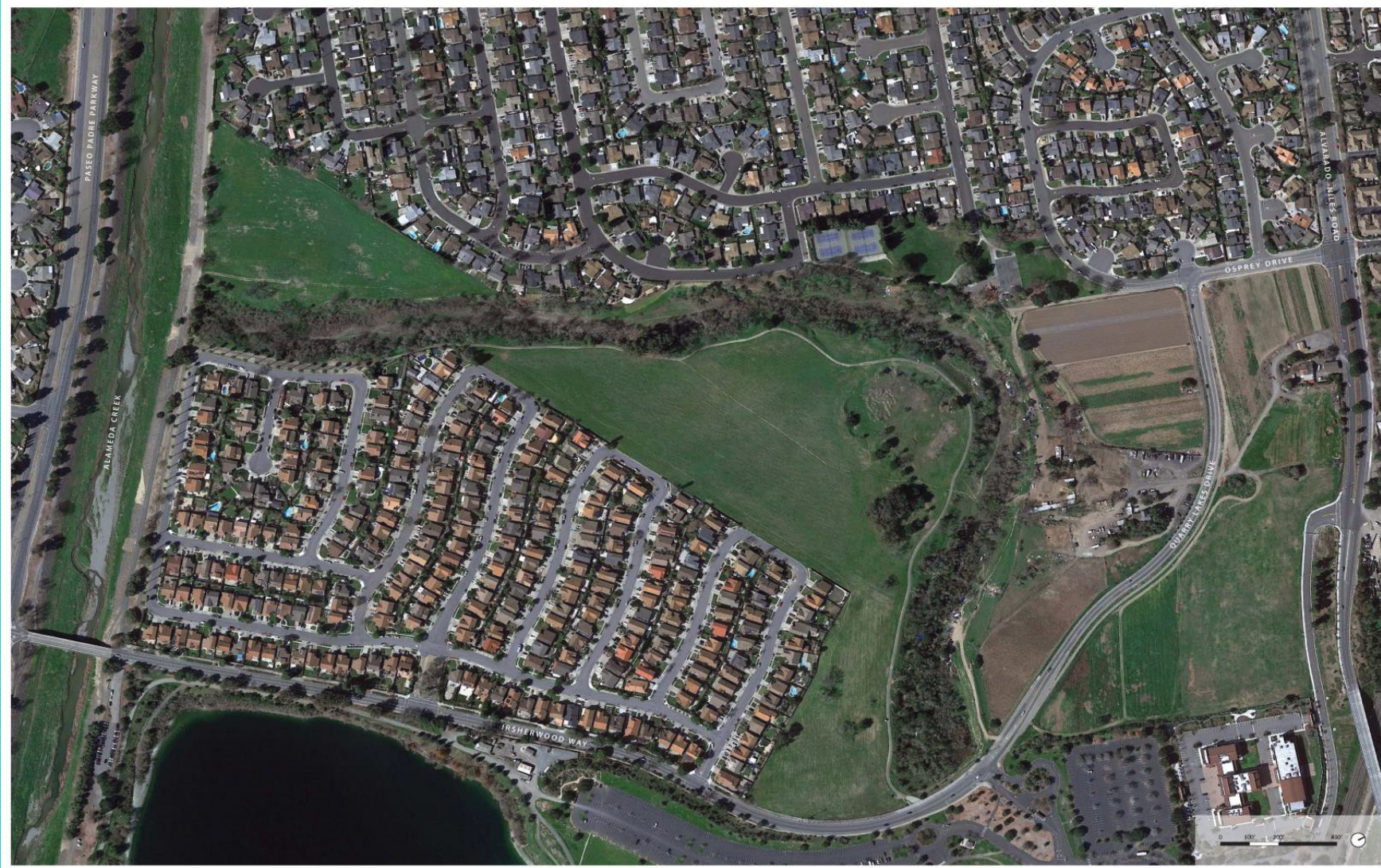
ETHNIC STUDIES and SOCIAL JUSTICE

Ramirez Farm and Peterson Farmhouse complex is at risk.
Let's preserve history, agriculture and natural resources
for future generations | story of today, our past, our
future and action

Maria Ramirez and Liz Ames, Save Our Hills

Housing and Highway Development Proposal | Encroaches on Alameda Creek, Old Alameda Creek, and Ramirez Farm and Peterson farmstead eligible for national, state and local historic significance

Alameda Creek on right. Small numbers of wild steelhead continue to try to enter Alameda Creek regularly.

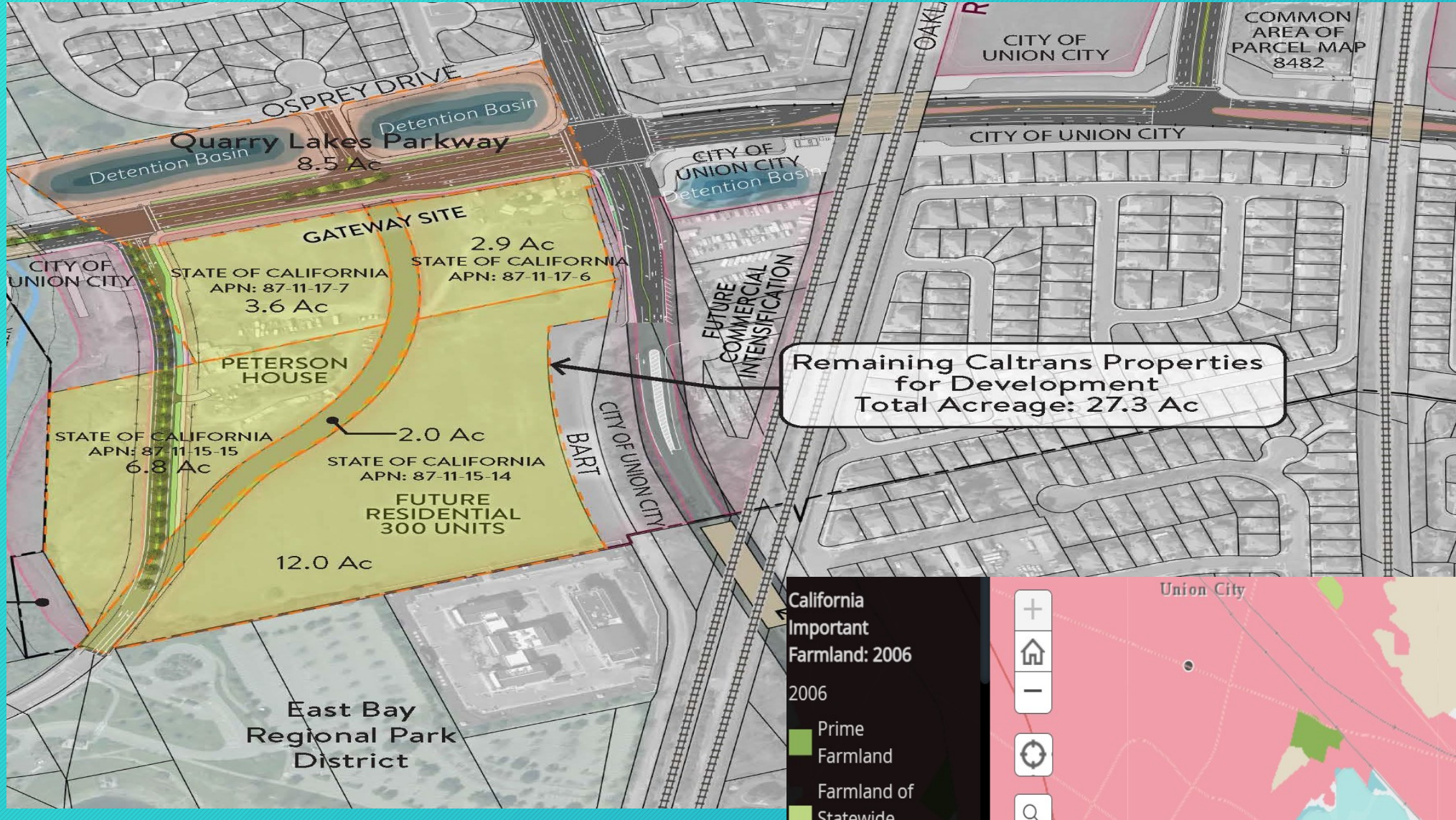


2
TODAY

Ramirez Farm on Left. City agrees to remove importance of farmland in exchange for housing and a highway.

Ramirez Farm on Caltrans Property. The state and Union City led the way to plan for the East West Connector also know as Quarry Lakes Parkway, a “local road” through Fremont and UC to Dumbarton Bridge | Highway 84

3
TODAY



Just 3 years prior to the approval of the 2009 EWC EIR to build, the State Dept. of Conservation removed prime farmland designation maximizing the CA property value for sale.

Parkway...

4

TODAY

- Project to be built on publicly owned land
- State purchased 37 acres and Peterson farmstead as part of State Route 84 realignment now renamed as a parkway
- Land area 37 acres, of which 25 acres – Ramirez Farm remains
- City has purchased farmland from state with conditions to build
- Peterson Farmstead & Ramirez farm grows local produce

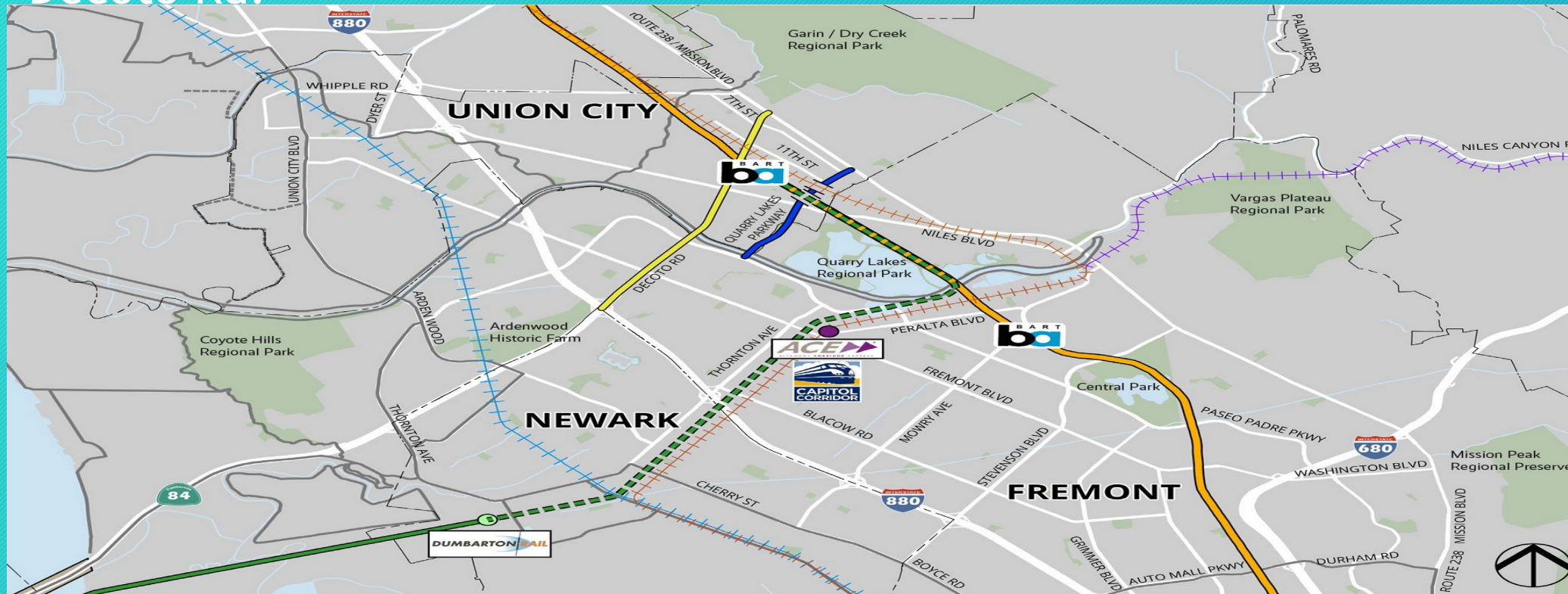
07/18/2023

CA Transportation Plan 2050 | Plan increases 90 percent vehicle miles travelled (VMT) for trucks transporting goods to current and growing markets.

5
TODAY

State Route 84 Niles Canyon leads to the Dumbarton Bridge from Decoto Rd.

UC BART Station District connects 4 arterial roads each handling 35K cars/trucks per day: HWY 238- Mission Blvd, SR 84 - Niles Canyon, Decoto Road, Alvarado-Niles Road



- Quarry Lakes Parkway
- Decoto Complete Streets Corridor
- Existing Trails
- Proposed SF Bay Trail
- ACE Corridor
- BART
- Capital Corridor
- UP Coast Subdivision
- Dumbarton Rail (Proposed)
- Dumbarton Rail (Potential)
- Dumbarton Rail Station (Proposed) Newark
- Capitol Corridor/ACE Station (Fremont)
- BART Station

Increases in vehicle miles travelled on local roads, interstates and highways increase challenges in our ability to meet emission targets, safety, equity and quality of life.



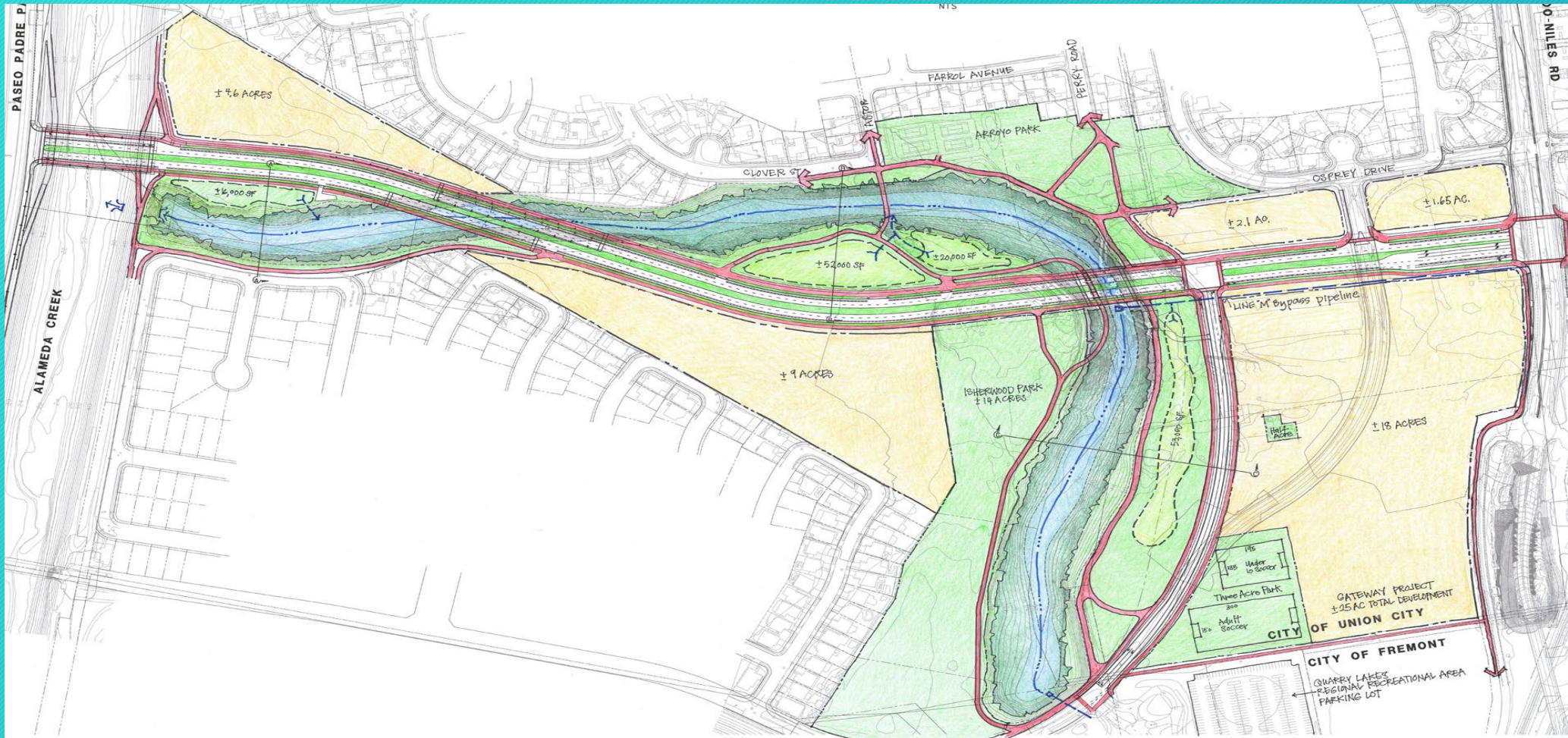
6
TODAY

5 phase, 2-mile Quarry Lakes Parkway will exceed \$300 Million estimates using our local tax dollars.

“All manner of roads and railroads contribute to diminished stream ecological health.” Bay Area Open Space Council | 2011

Quarry Lakes Parkway includes 3-bridges over Alameda and Old Alameda Creek. This major arterial will accommodate 35,000 cars/trucks per day, a “Gateway”

7
TODAY



4-lane parkway alters substantially the quality of air, water, traffic and noise level

New park proposal is next to parking lot below. Historic Farmhouse is not included.

Existing Old Alameda Creek | 35,000 more cars/trucks per day with Parkway

8

TODAY



07/18/2023

Long ago, Alameda Creek sustains life natives, wildlife, wetlands and meadows

9

OUR
PAST

Ancestors of the Ohlone people wandered into this land of great abundance 10,000 years ago.



Golden Eagle
Spotted over
Don Edwards
SF Bay National
Wildlife Refuge.



Some Landscapes
have not changed for
thousands of years.
Sea level rise
threatens
wetlands as an
important form of
infrastructure as bay
water to flood this
habitat and built
environments.

Witnesses to a Land of Wonder

10
OUR
PAST

1776, Father Pedro Font on the De Anza Expedition wrote, "I beheld a prodigy of nature, which is not easy to describe.... We saw the spouting of young whales, a line of dolphins or tunas, besides seals and **otters...**"



"Alameda Creek is a sparkling stream which rises in the mountains and dances lightly along its rocky bed, singing softly to the hills and trees that line its course, cheerily greeting the little tributaries that join it at the mouths of deep ravines, now and then taking a wild plunge over a ledge of rocks only to recover its accustomed dignity the next moment, and at length to spread out, clear and placid, upon the breast of the valley."

—from *Picturesque California*, edited by John Muir, 1888

Painting of three Ohlone people crossing the waters in San Francisco Bay

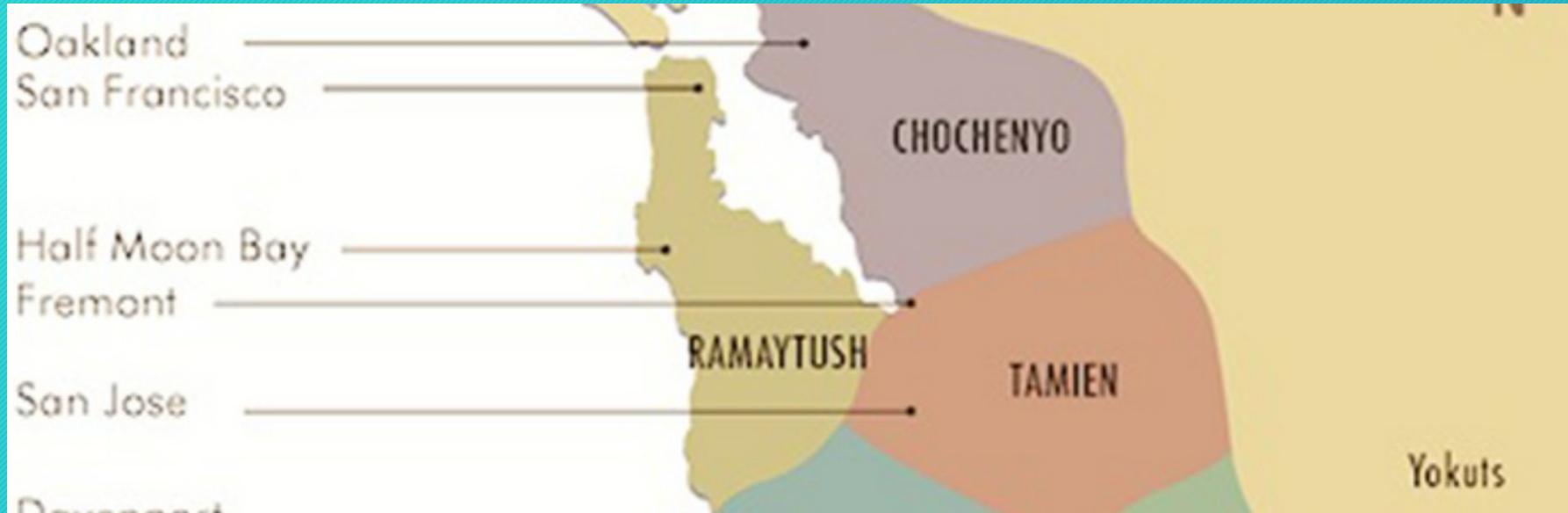


The Western Message Petroglyph found on the Vargas Plateau near Mission Pass trade route, where I-680 is now. The 17 petroglyph symbols in view show the Beaver's presence and then died off. Beaver reported to disappear from Alameda Creek Area from 1886 to 1890s.



1840s| Christopher “Kit” Carson was granted rights to trap beaver on Alameda Creek by the Mission San José padres, where they “abounded...from the mouth of its canyon to the broad delta on the bay”

11
OUR
PAST



Colonies establish in Bay Area

Missions Dominated Economic and
Spiritual Fabric of CA | 1769-1835



Ohlone Ceremonial Dance | 1806
Last triblet on Niles Cone | 1808



Ohlone Indian Ceremonial Dance at Mission San Jose in 1806.

1797 Mission San José was founded
on Ohlone land along the historic Juan
Bautista de Anza route | 1881 photo

Colonies Develop and Begin to Grow - Become Dependent on One Another

13
OUR
PAST

San Francisco Steamships 1849 | Gold Rush
Farmer John Horner chosen as First Farmer of CA in 1851 | “Union” Steamboat in Union City transports produce from Alameda Creek to SF

Post Railroad era 1870, Alameda County Remains as the FIRST Agricultural County in CA | Transport Infrastructure is at the heart of design 1873 | Indian Mounds near Shoreline



Western Transcontinental Railroad complete through Niles Canyon 1869 | Connecting West to the Eastern U.S.

14
OUR
PAST

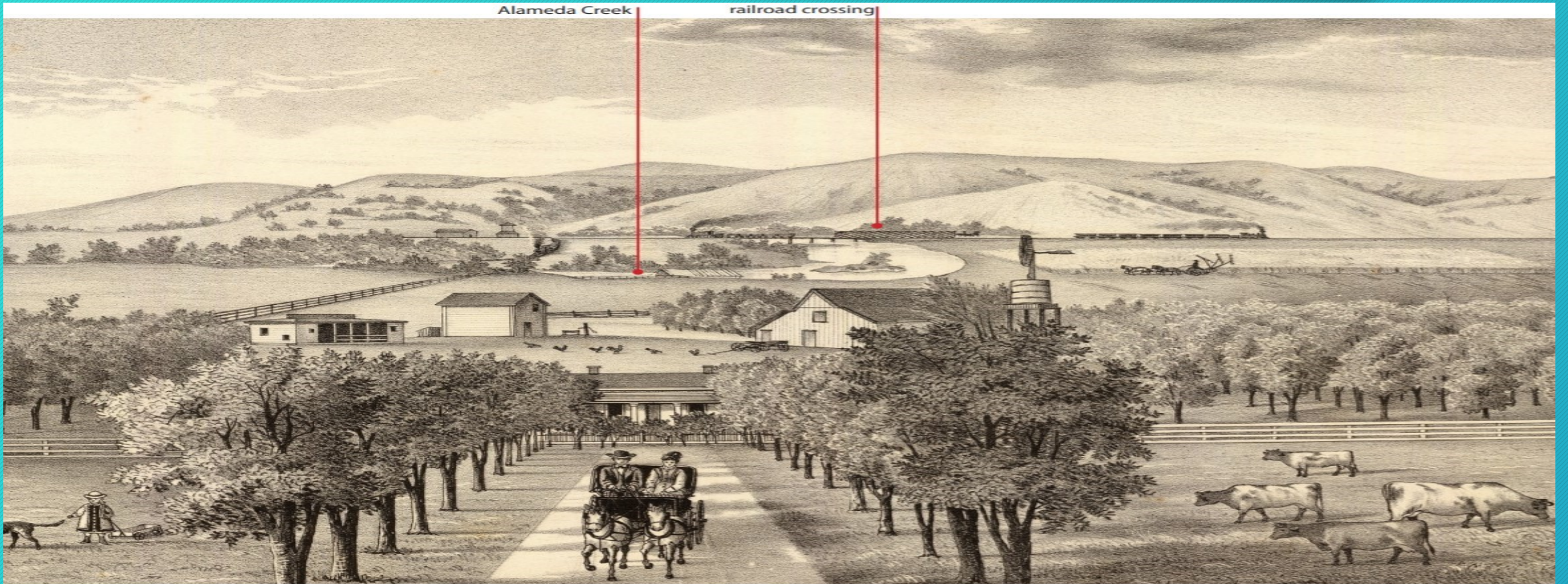


CA lions, Grizzly Bear, Coyotes, and Wolves preyed upon Deer, Elk and great bands of cattle in 1855

Invention of refrigerator car 1880 makes it possible to transport produce to Atlantic seaboard markets reaping large profits.

Adobe Ranch 1878

Farms along Alameda Creek 1878 | Pears, Plums, Apricots, and Peaches Flourish as Grain Yields Decline due to Soil Exhaustion



America's Food Supply Depends on Preservation

16

OUR

FUTURE

The decisions our California communities make now with respect to managing housing density and urban growth are critical for our future.

It is essential that we accommodate additional population increases without compromising still more important agricultural land and open space.

California agriculture—and America's food supply—depends on it.

California needs housing but must protect its farms.

07/18/2023

California Farm Bureau Federation

Tons of steel and concrete will prepare for the massive build on farmland and ecosystems.



17
OUR
FUTURE

However, it's popular to close highways, roads and rail lines for linear parks to protect resources, and ecosystems..

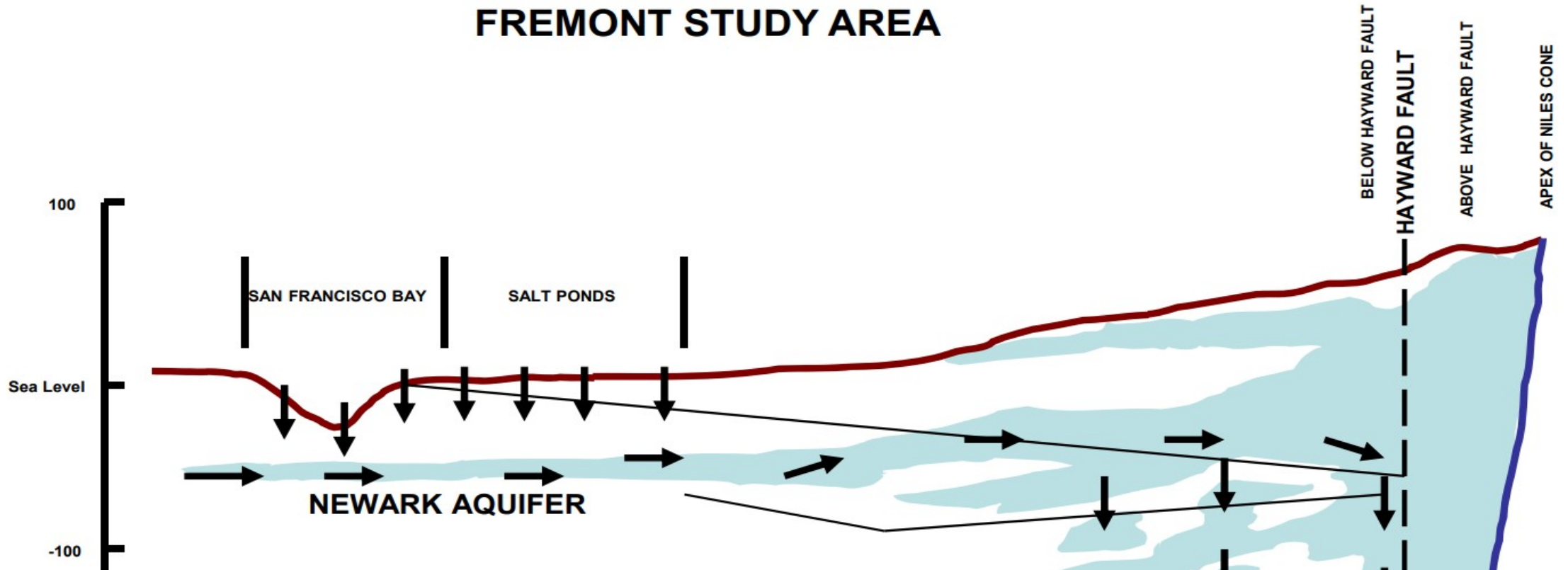
Niles Cone Aquifers Underneath | CA Department of Water Resources

18

OUR

FUTURE

INTRUSION OF SALT WATER INTO THE FREMONT STUDY AREA



Climate Change Vulnerabilities | NOAA's Office for Coastal Management

19

- Under a 2050 climate scenario developed by NASA, continuing growth of the greenhouse emission at today's rate could lead to **additional global warming of about 1.5 degrees Celsius by 2050.**
- **Higher Temperatures**
 - If we continue on our current path, by the middle of this century, the average American will likely see 27 to 50 days over 90 degrees each year.
- **10% Nation Wide Crop Loss** - Without adapting to the changing climate
- **Unprecedented Sea Level Rise**
 - The projected 10 to 12 inches (on average) of sea level rise over the next 30 years (2020 to 2050) will be as much as the rise measured over the last 100 years (1920 to 2020).
- **Emissions Matter**
 - Current and future emissions matter. Failure to curb future emissions could cause an additional 1.5 to five feet of rise, for a total of 3.5 to seven feet by the end of this century.

Climate Change Vulnerabilities | Health, Safety Hazards drive Social and Environmental Injustice

20
OUR

FUTURE

Hazards will impact public health and safety, public and private property and infrastructure, and natural resources.

- Wildlife populations have fallen by more than 2/3 in less than 50 years, a “catastrophic decline” shows no sign of slowing per WWF | 2020 BBC Environment Correspondent Helen Briggs
- Alameda County & CAL FIRE designates county hills as an extreme & high fire hazard | 2021 & 2022; Largest wildfires on record
- State, regional and local planning (Union City) continue to fund infrastructure promoting Vehicle Miles Travelled (VMT) and shows no sign of slowing
- Costs of social and environmental injustices are rising

A land where historic moments and landscapes embrace our past and forge our future.

Ramirez Farm & Peterson Farmhouse Complex

21
ACTION

We want to preserve and conserve our ecosystems, the last remaining farm and farmhouse for generations to come.

07/18/2023

Eligible for National Register of Historic Places (NRHP), State and Local Historic Listing | Prime Farmland

22
ACTION

Queen Anne Style Peterson
1884 Farmhouse complex
includes water tank, 6-acres



History and prime
farmland is not
recognized.



Quarry Lakes Parkway project

23
ACTION

- 10 acres of land reserved for the parkway, farmland taken for road will not be replaced
- Union City continues to request for supplemental taxes to fund City operations, roads and infrastructure
- \$300 M project in today's \$'s, likely will be higher /double
- Road 2.5 miles long, 4 lanes wide
- Updated Station Housing Plan > units 10 to 30 units/acre
- #535 multi-family townhomes and apartments, min. affordable units on farm

07/18/2023

Transit Villages Must be Walkable and Multimodal to Connect Places without Single Occupant Vehicles

Propose a NEW GOAL: Create enhanced open space, community agriculture, access to creeks, and restored natural habitat, offering additional recreational and educational local and regional opportunities.



Propose a NEW Station District

24
ACTION

Consider a linear park connecting BART to creeks, farms and potentially over I-880 to the Bay on a multimodal path



Union City BART Station District

25
ACTION



Rendering of 11th Street in station district community with BART at-grade on the right.

Current Quarry Lakes Parkway Status

26
ACTION

- Union City is going full “steam ahead on project”
- Alameda County Transportation Commission has authorized design funds over \$2M
- Project not fully funded at this juncture
- City is VERY INTERESTED in own this land and build suburban and highway development
- Project to be built in phases, Sell 27-acre farm to housing developer | 2024
- Phase 1 design to build housing and develop parkway on Ramirez Farm, removing the historic farmhouse is underway
- Design/Construction of remaining phases will follow pending available funding

07/18/2023

Timeline (tentative)

27
ACTION

- CALTRANS farm sale to Union City in process | by 2024
- Union City issues notice to stop Ramirez farming operations | Dec. 2023
- Complete Quarry Lakes Parkway Design and Permitting 2023
- CA Transportation Commission (CTC) | 2024
Action to approve sale to Union City in 2021 is dependent on developer, city council, community approvals | Begin Construction

07/18/2023

Next Steps

28
ACTION

- Various groups are working to stop the project
- Focus on Non-Profit acquisition of land
- Engage agencies to recognize the area is prime farmland, protect history, the farmhouse and restore ecosystems
- Mobilize community support by opposing City ownership of state land to build Highway 84, Quarry Lakes Parkway

07/18/2023

Call to Action

29
ACTION

If nothing changes, more cars and trucks by the thousands will be using our roads threatening the integrity of our history, agriculture and natural resources on which we depend.

Attend city council meetings; Ask for neighborhood mtgs.

Join us on walking tours; Mobilize to save our environment

Provide support letters to preserve and conserve Ramirez Farm, Peterson Farmhouse and old Alameda Creek for future generations.

Spread the word!

Contact:
Liz Ames 510.371.1311
saveunioncityhills@gmail.com